

MICHELIN® TRACK CONNECT **SENSOR INSTALL**

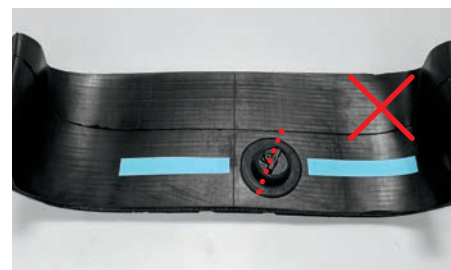
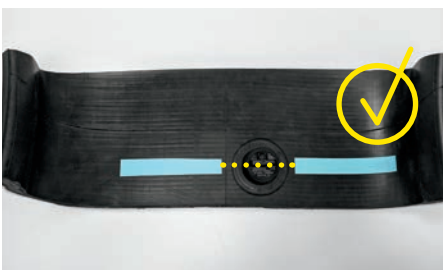


1 ROLL BACK POCKET



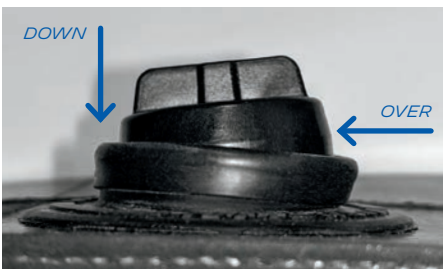
2 POSITION SENSOR

The raised portion of the sensor is the antenna and must be aligned in the radial direction.



3 INSERT SENSOR

Install sensor with one edge down slightly, and push sensor down and over toward the lower edge. Press sensor down. Sensor must sit totally flat.



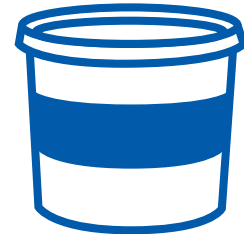
4 ROLL UP POCKET AROUND SENSOR

When pocket is rolled up over sensor, the rubber lip will be slightly over the sensor and even, all the way around.



1 BEFORE MOUNTING

Mounting paste is recommended. No matter what lubricant is used, ensure it does not pool on inside of tire.



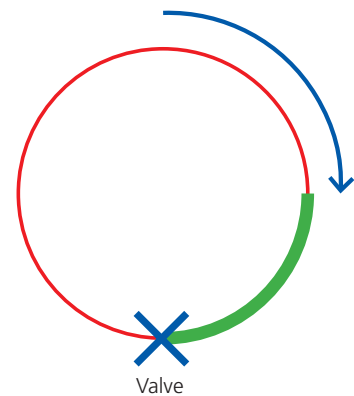
Heavy Paste

2 VALVE

The assembly always starts and finishes with the valve. Place the TMS in the $\frac{1}{4}$ of the tire preceding the valve in the direction of the rotation of the rim.

The **green zone** corresponds to the area in which the sensor must be compared to the valve, when the valve is on the assembler side. The **red zone** is to be proscribed. The blue arrow indicates the rotational direction of the rim.

⚠ WARNING If the sensor is placed after the valve, there is risk that the TMS pocket could be cut or damaged, causing the sensor to eject.



Valve

3 AFTER MOUNTING

After mounting the first bead, make sure that the TMS does not touch the hook of the rim.

